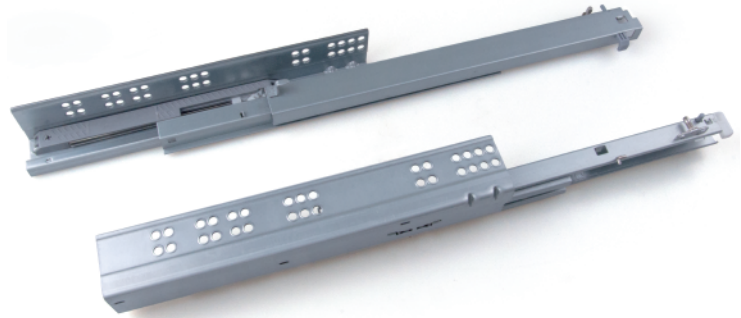


**SOFT - CLOSING**

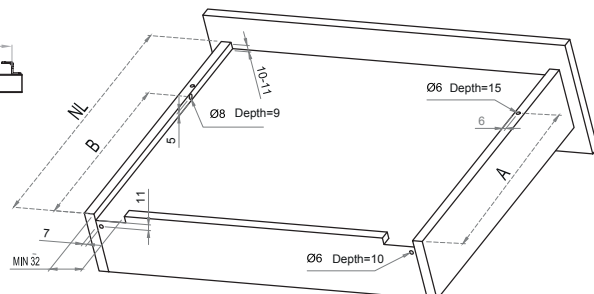
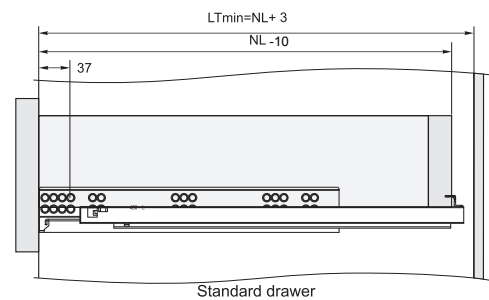
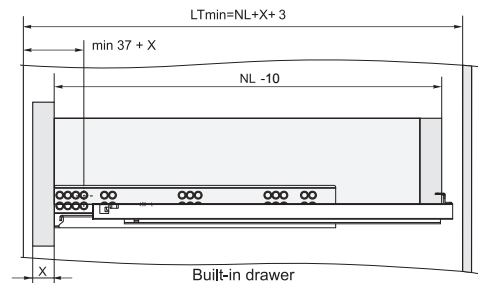
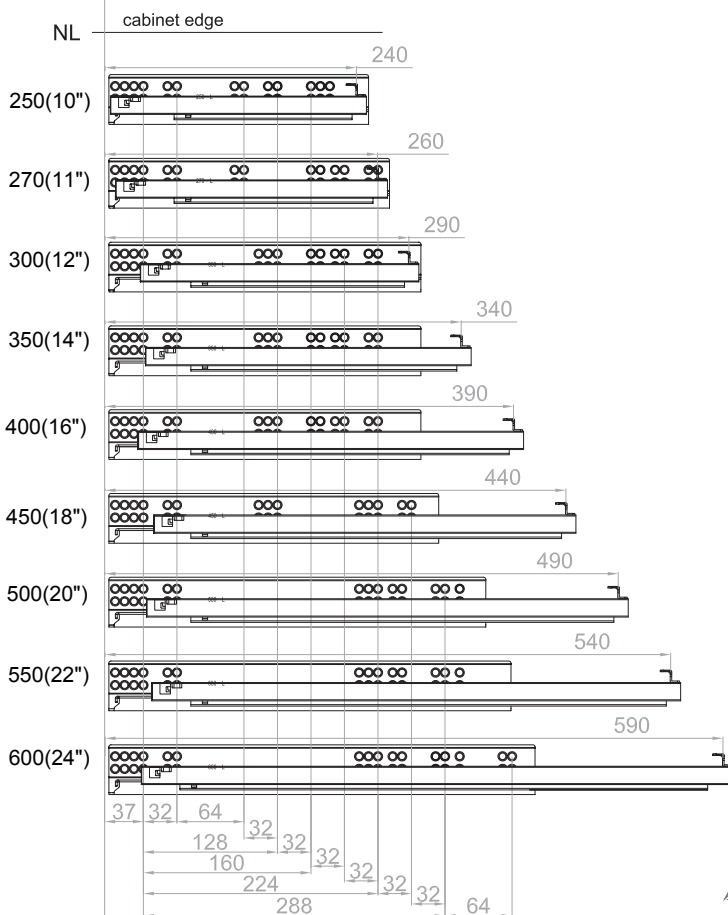
**Full-extension undermount drawer slide (with bolt locking) - RM721**

Technical specifications:

- Main material: Galvanized steel.
- Max loading capacity: 30kg.
- Life guarantee: 50,000 cycles.
- Thickness of board: ≤16mm.
- Adjustable opening and closing strength: +25%
- Full extension, bolt front fixing, easy height adjustment, make an economical solution for industry.
- Superior sliding stability.
- Easy and safe mounting and dismounting for drawers.
- Undermount drawer slide support quick installation and disassembly.
- Opening and closing strength can be adjusted with eccentric screw on the damper.

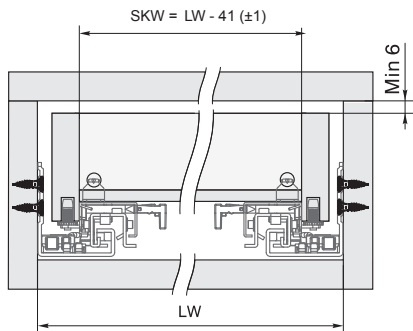


Installation dimensions

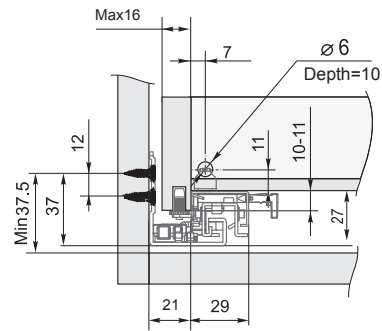


NL	240	260	290	340	390	440	490	540	590
A	190	205	245	270	305	330	355	390	415
B	200.5	215.5	255.5	280.5	319.5	369.5	419.5	469.5	519.5

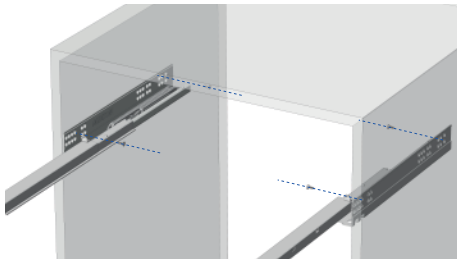
## Full-extension undermount drawer slide(with bolt locking)



**LW** - Cabinet inner width  
**SKW** - Drawer inner width(≤16mm drawer side thickness)

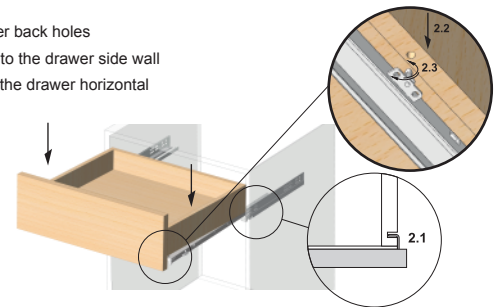


### 1. Install the slides on the cabinet



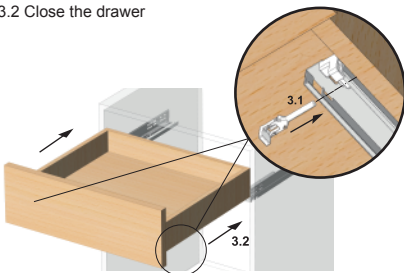
### 2. Set the drawer on the slides

- 2.1 Insert the slide hook into the drawer back holes
- 2.2 Insert the slide adjustable screw into the drawer side wall
- 2.3 Adjust the left/right screw to make the drawer horizontal



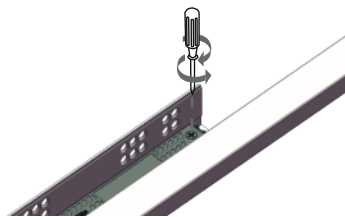
### 3. Fixing the drawer and slides

- 3.1 insert the left/right plastic bolts into the pre-drilled holes on the drawer side walls
- 3.2 Close the drawer



### 4. Adjustable opening and closing mechanism:

When the drawer takes more than 20kg, adjust the eccentric screw on the damper, max 25% more strength will be applied, so that make the movement smooth.



### 5. disassembly of the drawer

- 5.1 take out the plastic bolt to separate the drawer from the slides
- 5.2 take up the drawer
- 5.3 Draw out the drawer

